

Construction staff and operatives must ensure the principle contractor has provided thorough and accurate information on all health and safety aspects relating to the design identified on this drawing include the review of:

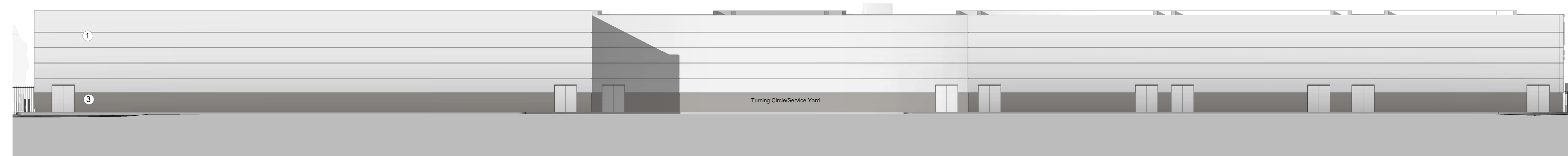
- Design/contractor risk assessments
- Method statement
- Permit to work
- Pre construction information

The designers note that the following health and safety risk relating to this drawing have not been eliminated during the design process:

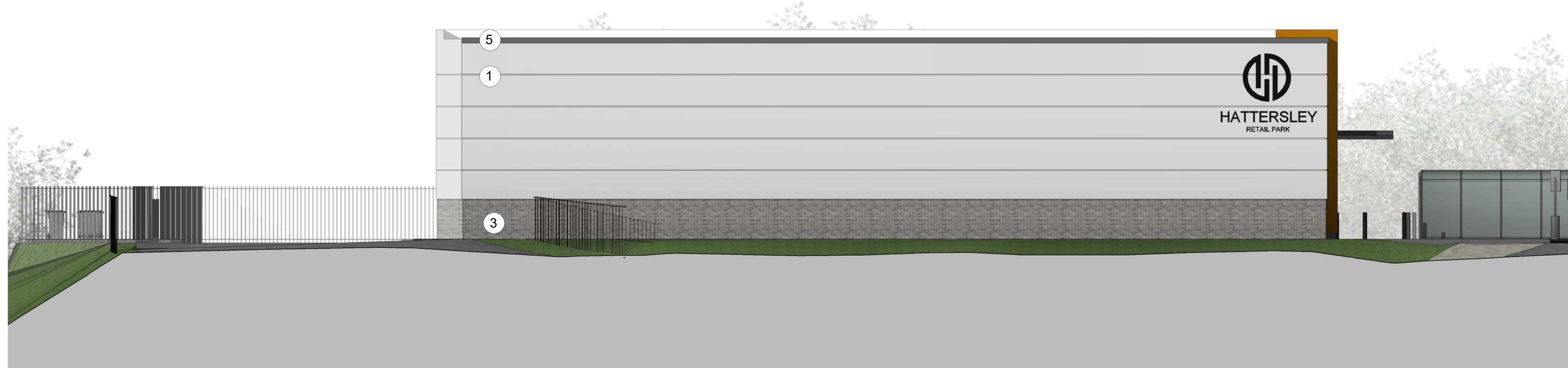
ref	residual risk
-----	---------------



Units 2-6 West Elevation
1 : 125



Units 2-6 East Elevation
1 : 125



Units 2-6 North Elevation
1 : 100



Units 2-6 South Elevation
1 : 100

Material Key

- 1. Kingspan Composite Panel - Gull Grey
- 2. Kingspan Composite Panel - Metallic Copper
- 3. Blue/Grey Brick
- 4. Curtain Walling
- 5. Aluminium trim - Merlin Grey

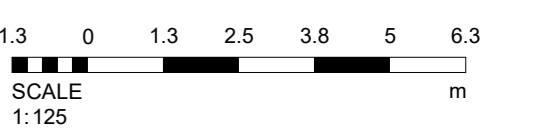
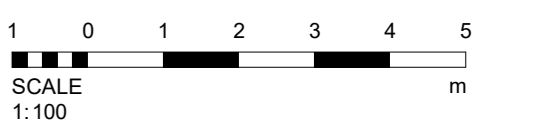
Standard Details:

Unit 1

- 6. Wall through colour render White RAL 9100
- 7. Plinth through colour render Grey RAL 7038
- 7. Insulated metal panel RAL 9005

Unit 11

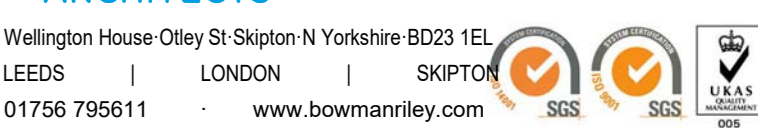
- 9. Through colour render White RAL 9010
- 10. British Western Red Cedar laid horizontally
- 11. 6mm thick aluminium backed panels, powder coated to Pantone 202C



A	Brand Logo Updated	03/01/18	WG	AW
	revision	date	by	chk

All dimensions to be verified on site, and the Architect informed of any discrepancy. All drawings and specifications should be read in conjunction with the Health and Safety Plan; all conflicts should be reported to the appointed Principal Designer. This drawing is the copyright of Bowman Riley Architects Limited. © DO NOT SCALE THIS DRAWING

- preliminary
- planning
- comment
- tender
- construction
- record



drawn by	checked by	date	scale @ A0
WG	AW	11/23/17	As indicated

Hattersley, District Centre
Hattersley

Proposed Elevations - Unit 2-6

project number	drawing number	revision
7735	011	A

file reference: C:\Users\will.gains\Documents\7735-BRA-Hattersley-M3-A-011-Maple Grove\Maple Grove.dwg